



## SSS-5

Swing Door Safety



## Full Swing Door Safety with only 1 PCB unit

The SSS-5, with 6 spots of detection per PCB unit ensures pedestrian safety levels exceeding EN16005 standards



### MAXIMISE PEDESTRIAN SAFETY

Only 1 PCB unit is required to provide 800 - 1,000mm of safety coverage along the swing door width

### SAVE ON COSTS

No need to use 2 PCB units in one sensor housing to ensure compliance with EN16005

### REDUCE INSTALLATION TIMES

Removable wiring terminal block and push button detection distance settings significantly reduces on-site installation time

### STRONG & ROBUST

Solid, tough sensor body design not susceptible to vandalism or damage during installation

### PERFORMANCE RELIABILITY

The SSS-5 performs reliably on all floor surfaces and reflective environments



prEN 16005



[www.hotron.com](http://www.hotron.com)

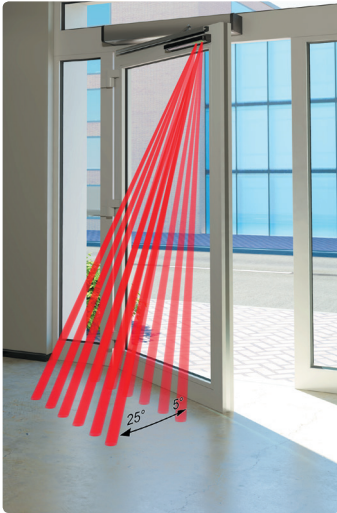
**HOTRON**

# SSS-5

Swing Door Safety



## Detection Area Adjustments



Detection Area Angle Adjustment



Detection Area Distance Adjustment

## Technical Specifications

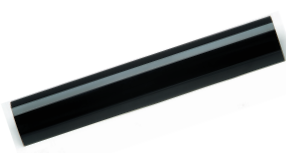
Model	SSS-5 Monitored Swing Door Safety Sensor
Detection Method	Infrared Presence Detection with P.S.D. distance measurement
Installation Height	2600mm (8.5ft) Max
Sensor Dimensions	SSS-5S1: 360mm (W), 45mm (H), 45mm (D) SSS-5M1: 692mm (W), 45mm (H), 45mm (D) SSS-5L1: 1,023mm (W), 45mm (H), 45mm (D)
Pattern Adjustment	Beam Angle Adjustment: 5, 10, 15, 20, 25 degrees Detection Distance Adjustment: Dead Zone, 50-500mm
Detection Range	0 - 2.5m (0 - 8ft 2 inches)
Presence Timer	Infinity
IP Rating	54
Power Supply	12 to 24V AC or DC $\pm$ 10%
Power Consumption	AC12V-1.7 [VA] (Max), DC12V-95 [mA] AC24V-2.3 [VA] (Max), DC24V-55 [mA]
Output Relay	Relay contact: DC50V 0.1A Non Voltage 1C
Response Speed	Less than 100 msec
Relay Hold Time	0.5 sec
DIP Switch Functions	Test Input Optical Interference Relay Output Mode Masking Detection Spots Detection Range
Operating Temperature	-20°C to +60°C, (-4°F to 140°F)

## Associated Accessories

End Cap Kit SSS-5



Filter Cover for SSS-5



Cabling Kit for the SSS-5



Black Weather Cover  
700mm in length  
SSS-5 WC

